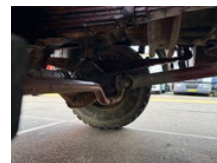
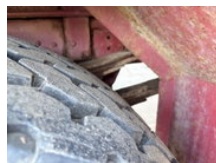
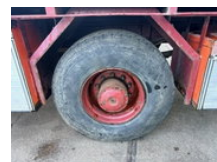




Mercedes-Benz 1922 AK 4x4 V6 WITH ONLY 128.500 KM!! AND HMF 1003K2 CRANE (MANUAL GEARBOX / FULL STEEL SUSPENSION / REDUCTION AXLE / P.T.O. / ETC.)

Algemene kenmerken

Merk	Mercedes-Benz
Model	1922
Subcategorie	Kraanwagen
Tellerstand	128.632km
Bouwjaar	1985
Datum eerste registratie	16-06-1988
Kleur	Oranje
Conditie	Gebruikt
Algemene staat	Erg goed
Brandstof	Diesel
Emissieklasse	Euro 2
Referentie	SN 59866940



Eigenschaften

Ledig gewicht	10.700kg
Laadvermogen	8.300kg
GVW	19.000kg
Serienummer	WDB61732615356940
Max. hefcapaciteit	10.000kg
Mast type	mastType.slide

Mercedes-Benz 1922 AK 4x4 V6 WITH ONLY 128.500 KM!! AND HMF 1003K2 CRANE (MANUAL GEARBOX / FULL STEEL SUSPENSION / REDUCTION AXLE / P.T.O. / ETC.)

Technische specificaties

Aantal assen	2
Asconfiguratie	4x4
Transmissie	Handgeschakeld
Vermogen	165kw

Omschrijving

PERFECT CONDITION MERCEDES-BENZ 1622AK (V6) 4x4 FULL STEEL SUSPENSION CHASSIS WITH HMF 1003K2 CRANE, MANUAL GEARBOX & REDUCTION AXLE!! 220HP, V6 ENGINE!! ZF6 GEARS MANUAL GEARBOX!! FULL STEEL SUSPENSION!! REDUCTION AXLE!! P.T.O!! SUNVISOR!! 3TH SEAT!! ETC!! HMF 1003K2 CRANE IN BACK OF CHASSIS (2 HYDRAULIC SLIDING SECTIONS)!! 4x STORAGE BOX!! RECK FOR OVERSIDE LENTGH ABOVE CABIN!! TRUCK IS IN CLEAN & GOOD WORKING AND DRIVING CONDITION, READY FOR THE (ELECTRICAL) JOBS!! MORE MERCEDES-BENZ 4x2 / 4x4 / 6x2 / 6x4 / 8x4 (CONSTRUCTION) TRUCKS IN STOCK FOR SALE!! (>75 TRUCKS/TRAILERS IN STOCK)!! PLEASE CHECK OUR WEBSITE; WWW.ENGEL-TRUCKS.COM SHIPMENT, STACKING, TRANSPORT OR LOADING?, NO PROBLEM FOR US, WE ARE AN " ONE STOP SHOP " COMPANY!! YOU CAN CHECK ALSO OUR COMPANY MOVIE ON YOUTUBE FOR THE FIRST IMPRESSION!! (<https://drone-pro.nl/project/video-engel-trucks-bv-2017/>) ENGEL TRUCKS; " YOUR GLOBAL TRADING PARTNER "

Accessoires

- Differentieelblokkering
- Spiegelverwarming
- Gereedschapskist
- PTO
- Radio/CD speler
- Snelheidsbegrenzer
- Zonneklep
- TROMMEL REMMEN
- 2 zits bijrijdersbank
- 200 liter Brandstoftank
- Aftakas (PTO)
- Bijrijdersbank
- BLADGEVEERD
- Hydraulic set
- Kastenwand in cabine
- Luxe chauffeurstoel
- Naaf reductie
- Sperdifferentieel
- Stalen laadvloer
- Stoelverwarming

- Timer voor standkachel
- Verticaal uitlaatsysteem
- Verwarmde buitenspiegels
- Vierwielaandrijving
- Zijzicht camera