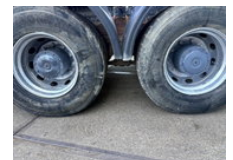


MAN 26.463 DFS 6x4 FULL SPRING SUSPENSION TRACTOR UNIT (EURO 2 / ZF16 MANUAL GEARBOX / ZF-INTARDER / FULL STEEL SUSPENSION / REDUCTION AXLES / HYDRAULIC KIT / ETC.)

Caractéristiques générales

| | |
|---------------------------------|-------------------|
| Marque | MAN |
| Mannequin | 26.463 |
| Sous-catégorie | Tracteur standard |
| Relevé du compteur kilométrique | 916.000km |
| Année de construction | 1994 |
| Date de première inscription | 12-06-1994 |
| Couleur | Orange |
| Condition | Utilisé |
| Conditions générales | Excellente |
| Carburant | Diesel |
| Classe d'émission | Euro 2 |
| Référence | SN 59728457 Z |



Caractéristiques

| | |
|---------------------|-------------------|
| Poids à vide | 9.400kg |
| GVW | 26.000kg |
| Cabine | Cabine couchette |
| Numéro de série | WMAF160561M188457 |
| Contenu du cylindre | 11.967cc |

MAN 26.463 DFS 6x4 FULL SPRING SUSPENSION TRACTOR UNIT (EURO 2 / ZF16 MANUAL GEARBOX / ZF-INTARDER / FULL STEEL SUSPENSION / REDUCTION AXLES / HYDRAULIC KIT / ETC.)

Spécifications techniques

| | |
|------------------------|-------------|
| Nombre d'axes | 3 |
| Configuration des axes | 6x4 |
| Transmission | Porte-mains |
| Actifs | 338kw |

Description

NICE CONDITION HEAVY DUTY M.A.N. 26.463DFT SLEEPER CAB 6x4 TRACTOR UNIT, FULL STEEL SUSPENSION (LAMME), REDUCTION AXLES, ZF MANUAL GEARBOX & ZF-INTARDER!! 460HP, EURO 2 ZF16 MANUAL GEARBOX!! ZF-INTARDER!! FULL STEEL SUSPENSION!! REDUCTION AXLES!! P.T.O.!! HYDRAULIC KIT!! ETC.!! TRUCK IS IN GOOD DRIVING CONDITION, READY FOR THE HEAVY TRANSPORT JOBS!! MORE M.A.N. 4x2 / 6x2 / 6x4 / 8x4 (CONSTRUCTION) TRUCKS IN STOCK FOR SALE!! (>75 TRUCKS/TRAILERS IN STOCK)!! PLEASE CHECK OUR WEBSITE; WWW.ENGEL-TRUCKS.COM SHIPMENT, STACKING, TRANSPORT OR LOADING?, NO PROBLEM FOR US, WE ARE AN " ONE STOP SHOP " COMPANY!! YOU CAN ALSO CHECK OUR COMPANY MOVIE ON YOUTUBE FOR THE FIRST IMPRESSION!! (<https://drone-pro.nl/project/video-engel-trucks-bv-2017/>) ENGEL TRUCKS; " YOUR GLOBAL TRADING PARTNER "

Accessoires

- Blocage de différentiel
- Rétroviseurs chauffants
- Phare arrière
- ABS
- Radio / lecteur CD
- Cabine de couchage
- Limiteur de vitesse
- Chauffage
- Pare-soleil
- Retarder
- DRUM BRAKES
-
- 16 gears Manual gearbox
- 430 Liter Fuel tank
- Prise de force (PTO)
- Système anti-blocage
- LAMES
-
-
-

- Luxery driversseat
- Hub reduction
- Différentiel d'écartement
-
-
- Heated mirrors
- ZF-intarder
- ZF16 gears manual