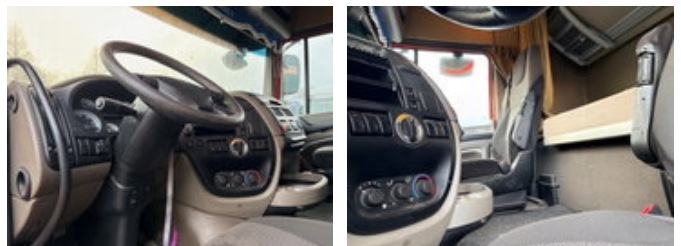




# DAF XF 105.460 SPACECAB AS-TRONIC (EURO 5 EEV / AS-TRONIC GEARBOX / AIRCONDITIONING / ELECTRICAL MAINSWITCH / COMPLETE SPOILERSET ON CABIN)

## General features

Brand	DAF
Model	XF 105.460
Subcategory	Cab over engine
Odometer reading	1.100.000km
Construction year	2013
Date of first registration	25-02-2013
Color	Orange
Condition	Used
General condition	Very good
Fuel	Diesel
Emission class	Euro 5
Reference	SN 59377745



## Characteristics

Empty weight	7.798kg
GVW	19.000kg
Cabin	Sleeper cabin
Serial number	XLRTE47MS0E977745

Cylinder contents

12.902cc

# DAF XF 105.460 SPACECAB AS-TRONIC (EURO 5 EEV / AS-TRONIC GEARBOX / AIRCONDITIONING / ELECTRICAL MAINSWITCH / COMPLETE SPOILERSET ON CABIN)

## Technical specifications

Number of axes	2
Axis configuration	4x2
Transmission	Automatic
Engine output	340kw

## Description

NICE CONDITION DAF FTXF105-460 ATE SPACECAB 4x2 TRACTOR UNIT WITH AUTOMATIC GEARBOX, COMPLETE SPOILERSET ON CABIN & AIRCONDITIONING!! 460HP, EURO 5 / EEV!! AS-TRONIC (12 GEARS)!! MX-BRAKE!! ELECTRICAL MAIN-SWITCH!! 620 LITER DIESEL TANK!! AIRCONDITIONING!! COMPLETE SPOILERSET ON CABIN!! SUN VISOR!! COMBI-LIGHTS!! ETC!! TRUCK IS IN NICE & CLEAN CONDITION, READY FOR THE JOB!! MORE DAF CF/XF EURO 2/3/4/5/6 IN STOCK FOR SALE!! (>75 TRUCKS/TRAILERS IN STOCK)!! SHIPMENT, TRANSIT REGISTRATION, STACKING, LOADING OR TRANSPORT? NO PROBLEM FOR US, WE ARE AN " ONE STOP SHOP " COMPANY!! PLEASE CHECK OUR COMPANY MOVIE ON YOUTUBE FOR THE FIRST IMPRESSION!! ( <https://drone-pro.nl/project/video-engel-trucks-bv-2017/> ) YOU CAN ALSO CHECK OUR WEBSITE; WWW.ENGEL-TRUCKS.COM ENGEL TRUCKS B.V.; " YOUR GLOBAL TRADING PARTNER "

## Accessories

- Differential Lock
- Heated Mirrors
- Anti-lock braking system
- Air conditioning
- Aluminium fuel tank
- Cruise control
- Roof spoiler
- Radio/CD player
- Sleeper cab
- Speed limiter
- Vehicle heater
- Visor
- Electric windows
- AS-TRONIC (12 GEARS)
- 2 Beds
- 
- Anti-lock braking system
- ASR
- 
- Electrically adjustable door mirrors
- Main switch
- Luxery driversseat

- 
- MX-Engine Brake
- Controlled slip differential
- Heated seat
- Heated mirrors
-