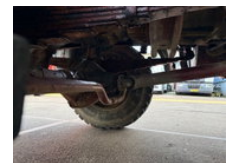
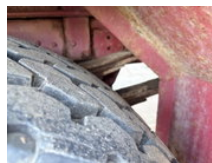




# Mercedes-Benz 1922 AK 4x4 V6 WITH ONLY 128.500 KM!! AND HMF 1003K2 CRANE (MANUAL GEARBOX / FULL STEEL SUSPENSION / REDUCTION AXLE / P.T.O. / ETC.)

## Allgemeine Merkmale

Marke	Mercedes-Benz
Model	1922
Unterkategorie	Kranwagen
Kilometerstand	128.632km
Baujahr	1985
Datum der Erstzulassung	16-06-1988
Farbe	Orange
Zustand	Gebraucht
Allgemeinzustand	Sehr gut
Kraftstoff	Diesel
Emissionsklasse	Euro 2
Referenz	SN 59866940



# Eigenschaften

Leergewicht	10.700kg
Tragfähigkeit	8.300kg
GVW	19.000kg
Seriennummer	WDB61732615356940
Hubkapazität	10.000kg
Masttyp	mastType.slide

# Mercedes-Benz 1922 AK 4x4 V6 WITH ONLY 128.500 KM!! AND HMF 1003K2 CRANE (MANUAL GEARBOX / FULL STEEL SUSPENSION / REDUCTION AXLE / P.T.O. / ETC.)

## Technische Spezifikationen

Anzahl der Achsen	2
Achsenkonfiguration	4x4
Übertragung	Handgeschenk
Motorleistung	165kw

## Beschreibung

PERFECT CONDITION MERCEDES-BENZ 1622AK (V6) 4x4 FULL STEEL SUSPENSION CHASSIS WITH HMF 1003K2 CRANE, MANUAL GEARBOX & REDUCTION AXLE!! 220HP, V6 ENGINE!! ZF6 GEARS MANUAL GEARBOX!! FULL STEEL SUSPENSION!! REDUCTION AXLE!! P.T.O.!! SUNVISOR!! 3TH SEAT!! ETC.!! HMF 1003K2 CRANE IN BACK OF CHASSIS (2 HYDRAULIC SLIDING SECTIONS)!! 4x STORAGE BOX!! RECK FOR OVERSIDE LENTGH ABOVE CABIN!! TRUCK IS IN CLEAN & GOOD WORKING AND DRIVING CONDITION, READY FOR THE (ELECTRICAL) JOBS!! MORE MERCEDES-BENZ 4x2 / 4x4 / 6x2 / 6x4 / 8x4 (CONSTRUCTION) TRUCKS IN STOCK FOR SALE!! (>75 TRUCKS/TRAILERS IN STOCK)!! PLEASE CHECK OUR WEBSITE; WWW.ENGEL-TRUCKS.COM SHIPMENT, STACKING, TRANSPORT OR LOADING?, NO PROBLEM FOR US, WE ARE AN " ONE STOP SHOP " COMPANY!! YOU CAN CHECK ALSO OUR COMPANY MOVIE ON YOUTUBE FOR THE FIRST IMPRESSION!! ( <https://drone-pro.nl/project/video-engel-trucks-bv-2017/> ) ENGEL TRUCKS; " YOUR GLOBAL TRADING PARTNER "

## Zubehör

- Differentialsperre
- Beheizbare Spiegel
- Werkzeugkasten
- Zapfwelle (PTO)
- Radio/CD-Spieler
- Geschwindigkeitsbegrenzer
- Sonnenschutzklappe
- DRUM BRAKES
- 
- 200 Liter Fuetank
- Zapfwelle (PTO)
- Beifahrerbank
- BLATT GEFEDERT
- Hydraulic Anlage
- 
- Comfortsitze Fahrer
- Hub reduction
- Differentialsperre
- 
- Sitzheizung

- 
- 
- Heated mirrors
- Allradantrieb
-